

ELECTRA

4-5 DÉCEMBRE 2021

HOTEL VILLA M.
MARSEILLE | FRANCE

1^Èmes journées françaises
pratiques de rythmologie
& de stimulation cardiaque

Notions d'anatomie/physiologie pour comprendre la rythmologie

COMITÉ D'ORGANISATION

Frédéric FOSSATI, Lille
Maxime GUENOUN, Marseille
Arnaud LAZARUS, Paris
Nicolas LELLOUCHE, Créteil
Jacques MANSOURATI, Brest
Jérôme TAÏEB, Aix-en-Provence

CONGRES-ELECTRA.COM



Dr Mathieu ECHIVARD, CHU de Nancy



ELECTRA

4-5 DÉCEMBRE 2025

VILLA M. - MARSEILLE | FRANCE

19^{èmes} journées françaises
pratiques de rythmologie
& de stimulation cardiaque

WWW.CONGRES-ELECTRA.COM

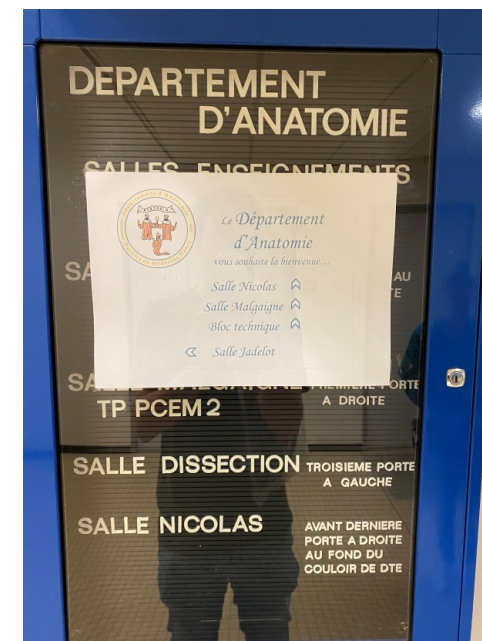
Plan de la présentation



Une visite guidée...



...qui commence ici !

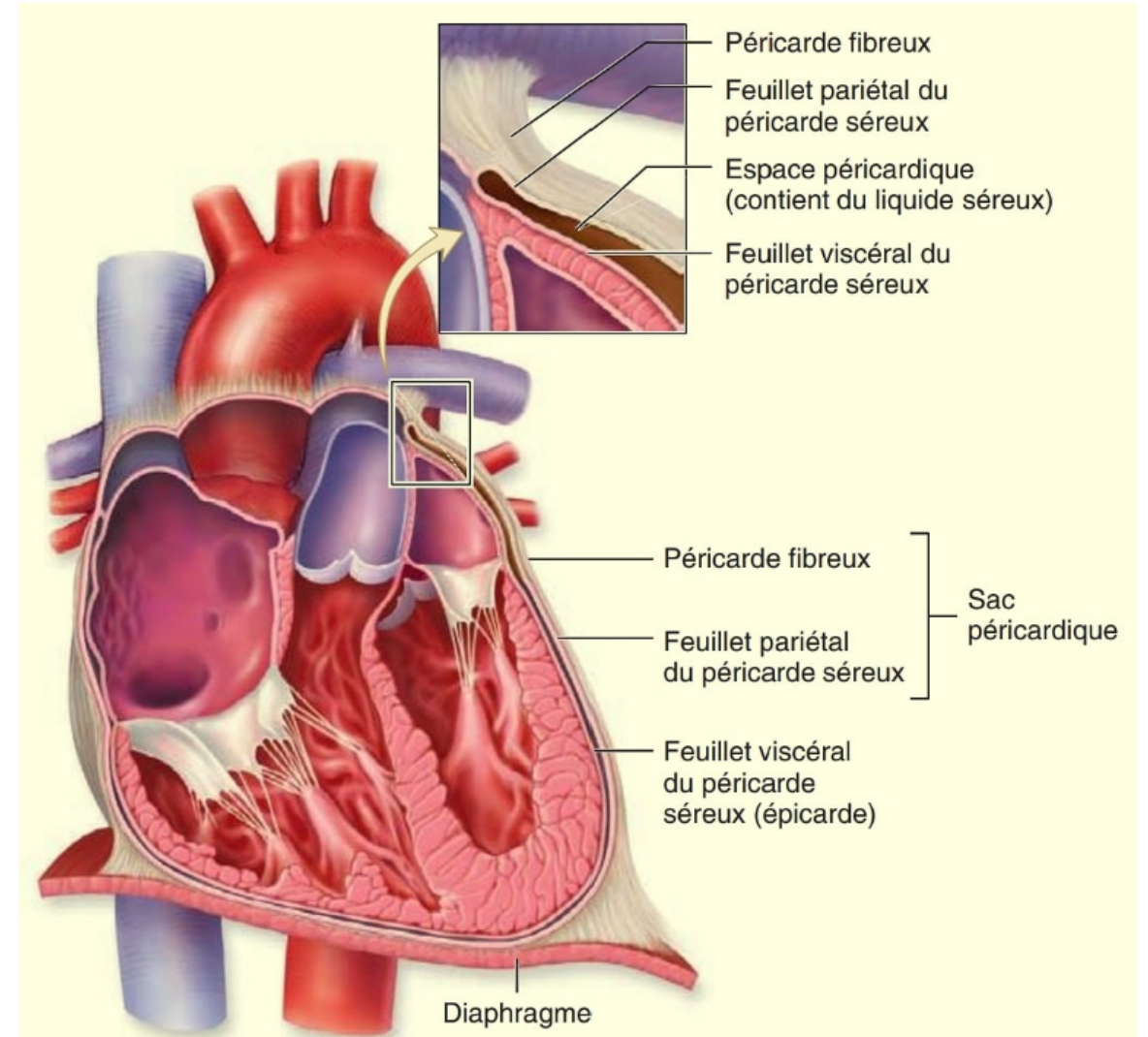


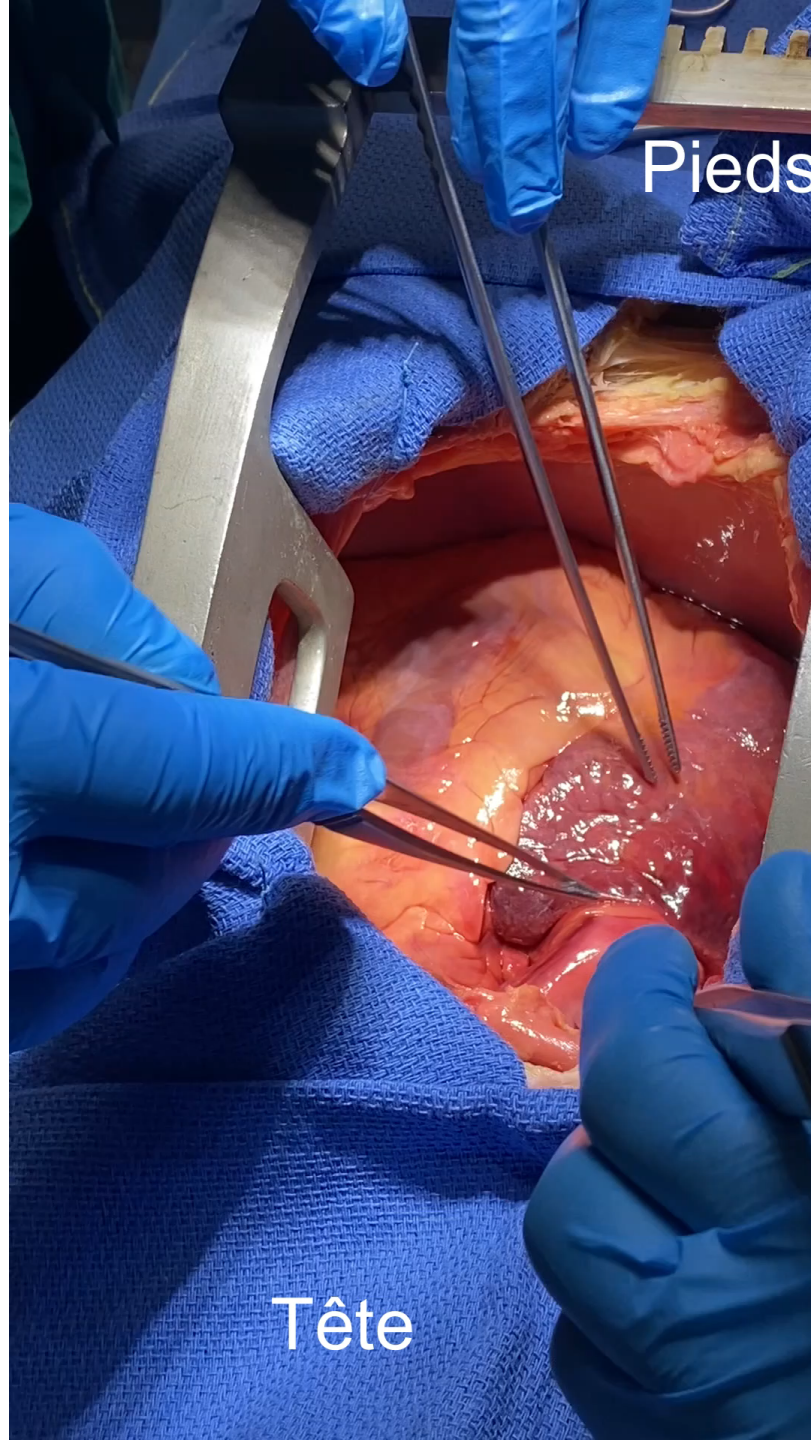
Remerciements à Pr BRAUN et Pr PEREZ

Et à Dr HUBERT (chirurgie cardiaque)



Le péricarde



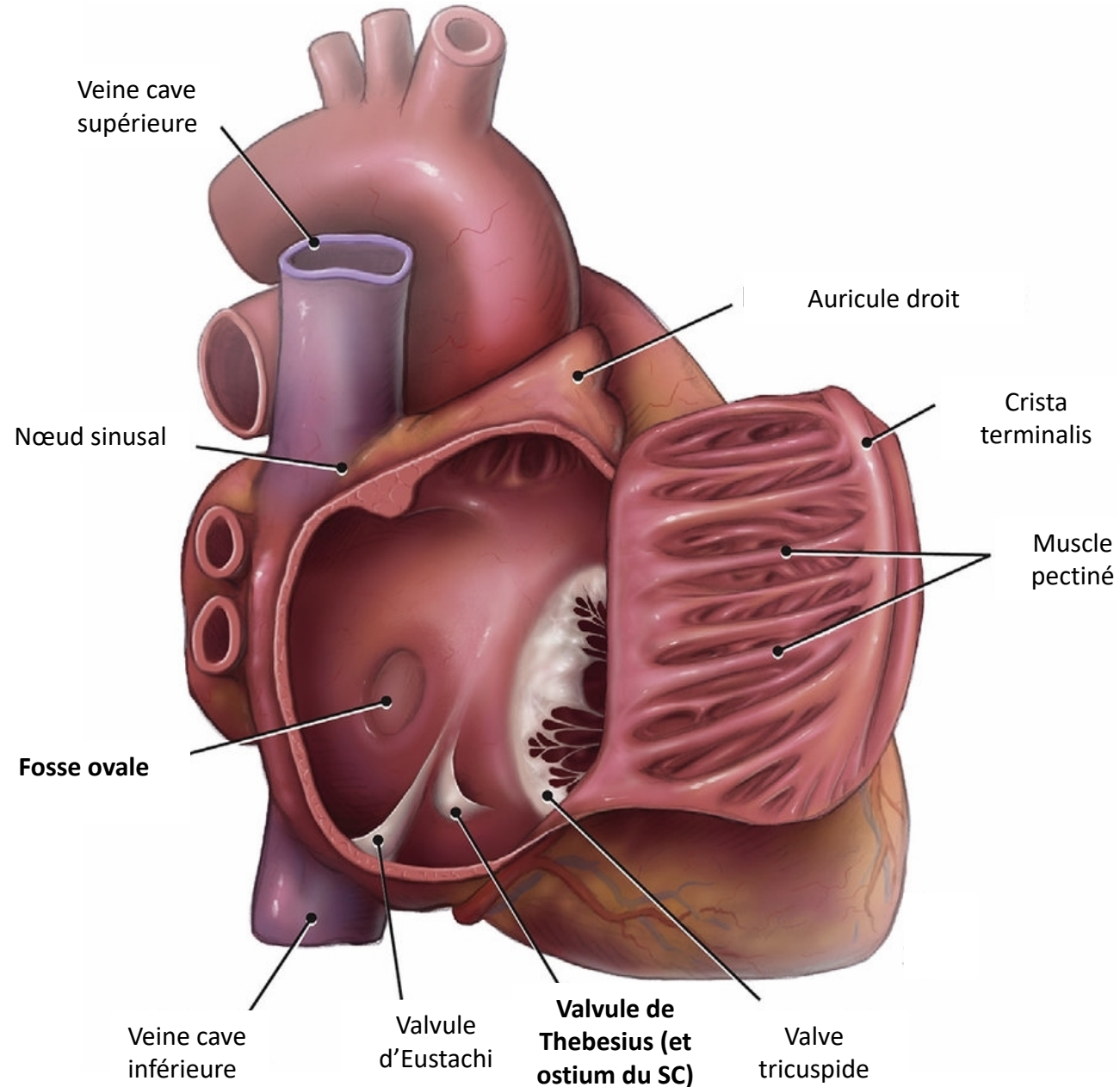


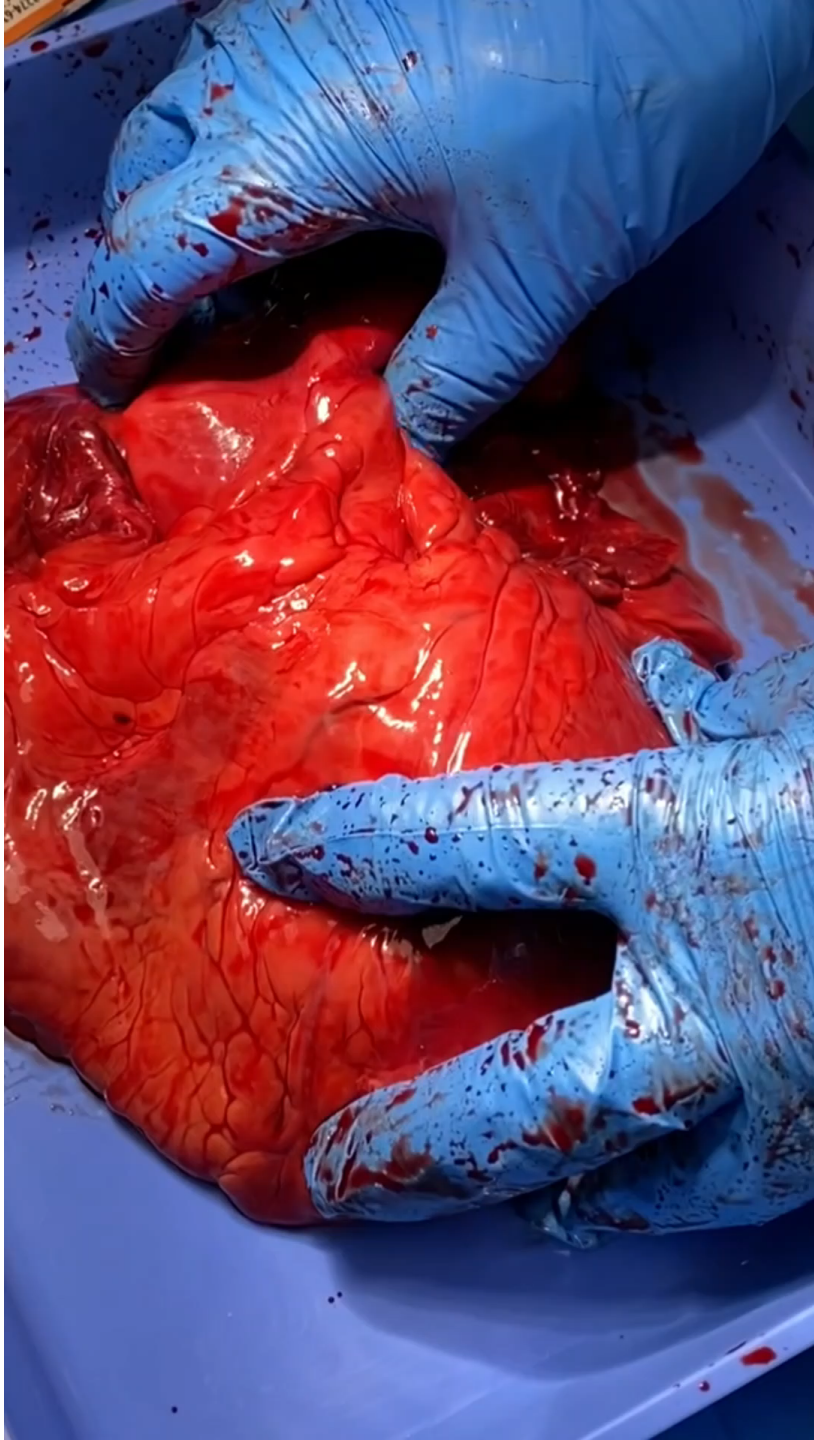
Pieds

Tête



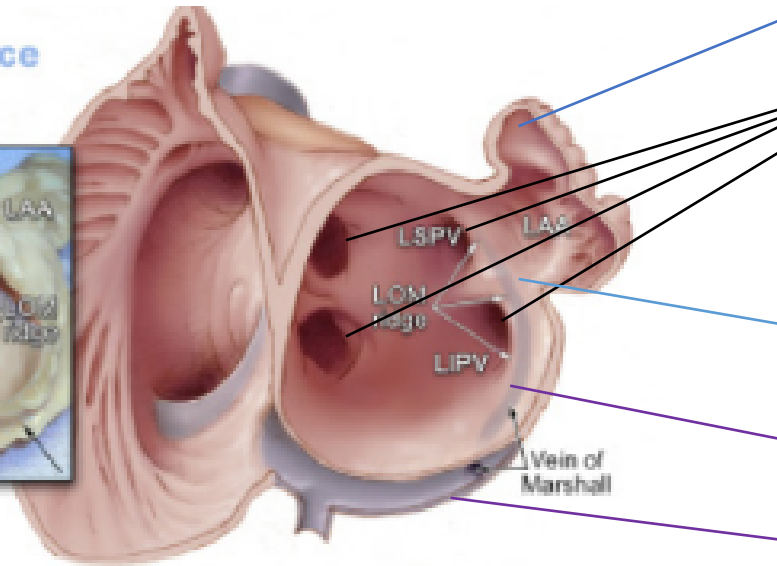
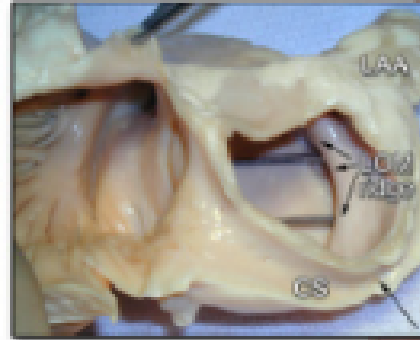
Anatomie de l'OD





Anatomie de l'OG

Endocardial surface

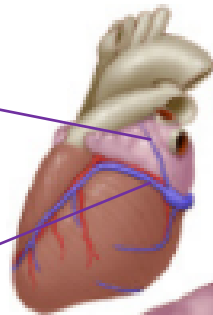


- Auricule gauche
- Veines pulmonaires
- Ridge
- Veine de Marshall
- Sinus coronaire

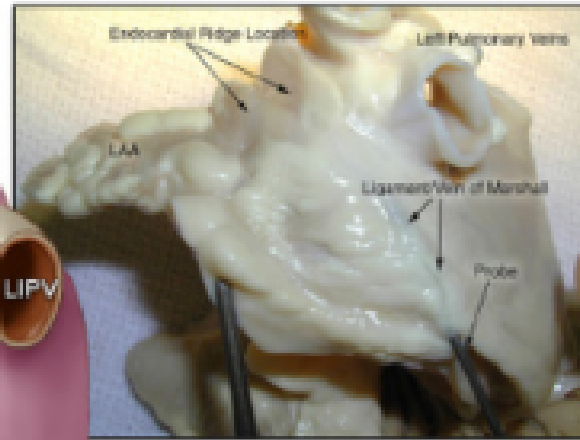
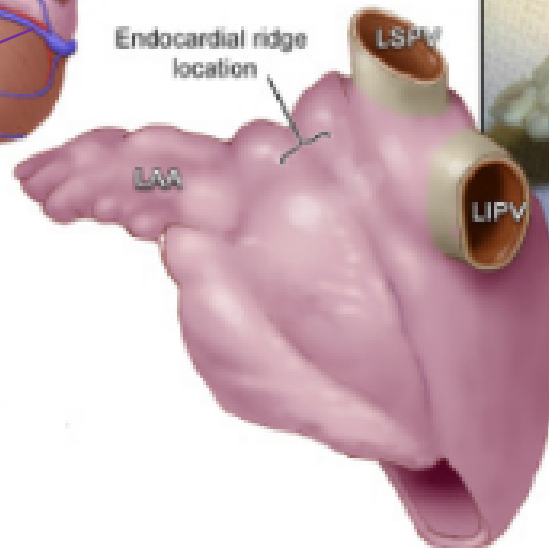
Veine de Marshall

Sinus coronaire

Epicardial surface

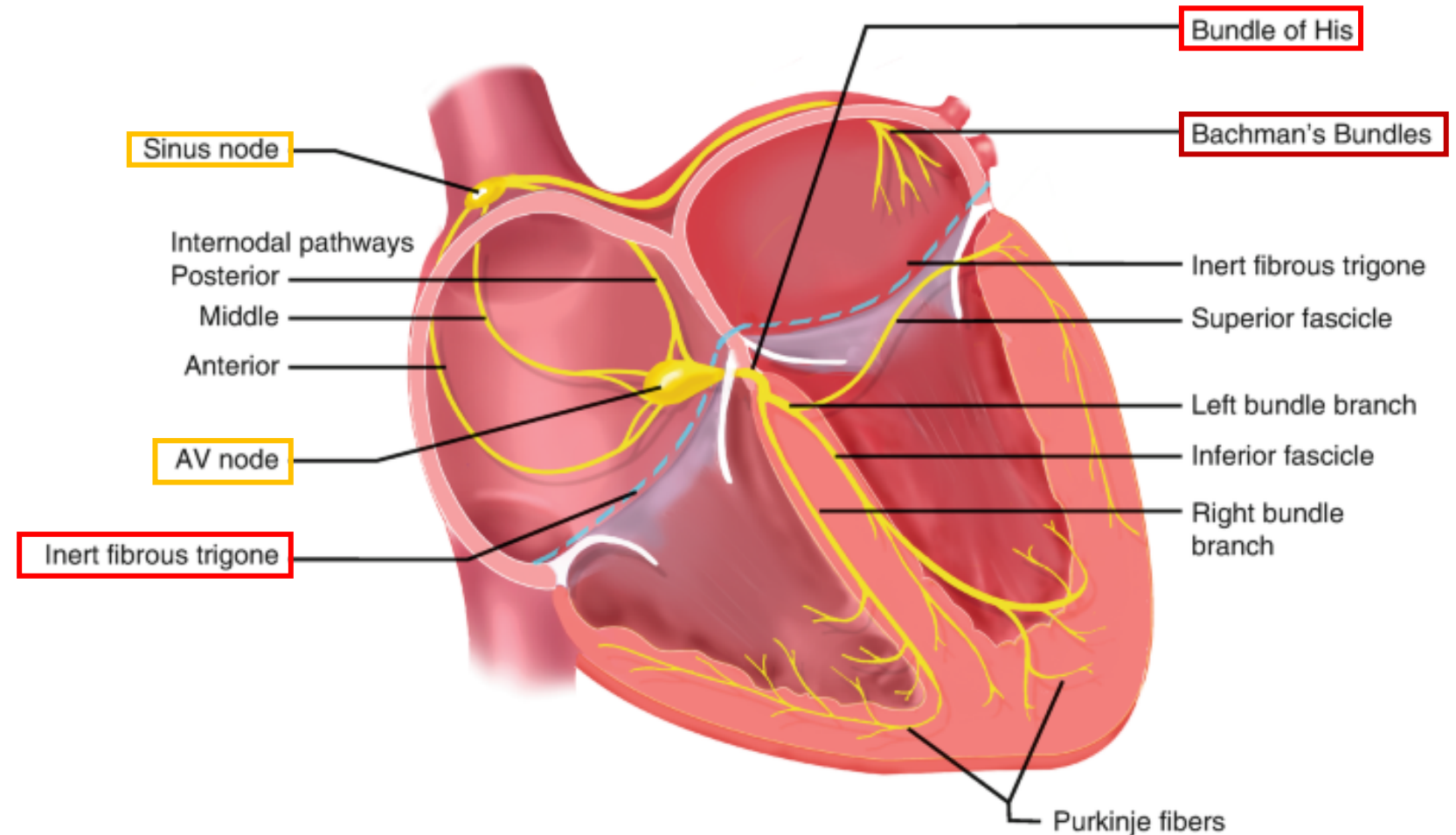


Endocardial ridge location



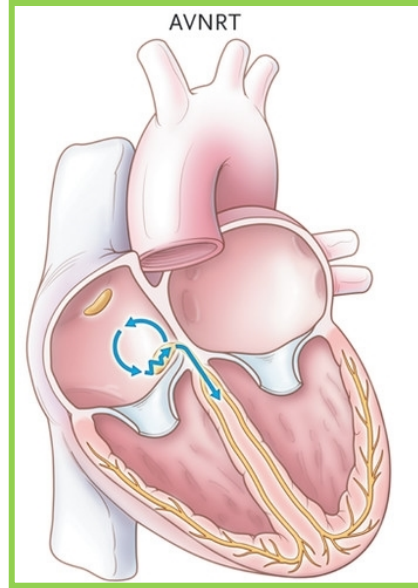
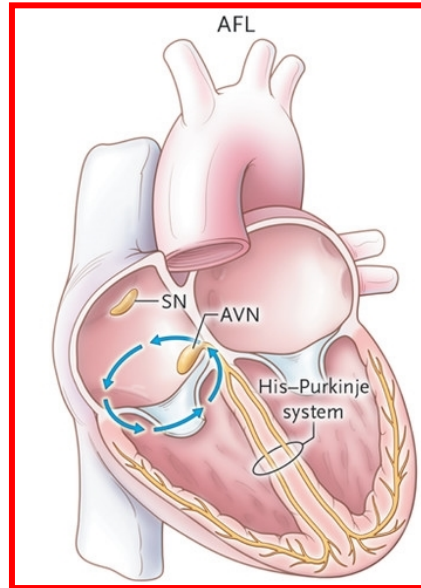
©2014
SEAYD

Activité électrique des oreillettes

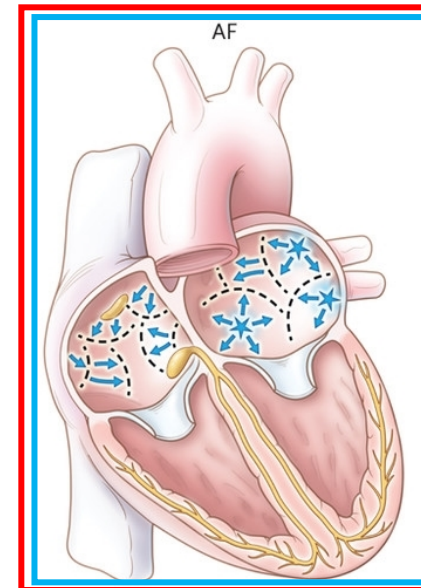


Arythmies atriales

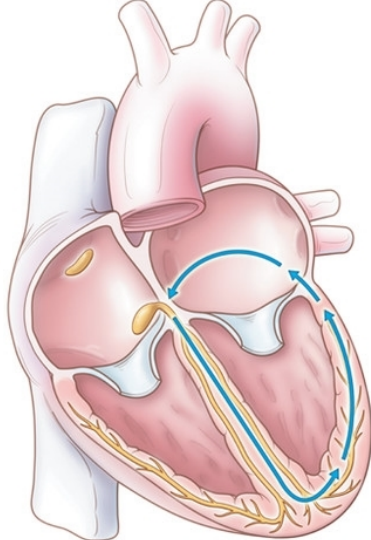
Regular Supraventricular Tachycardias



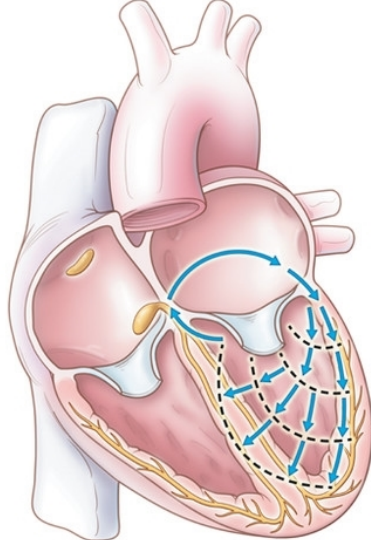
Irregular Supraventricular Tachycardias



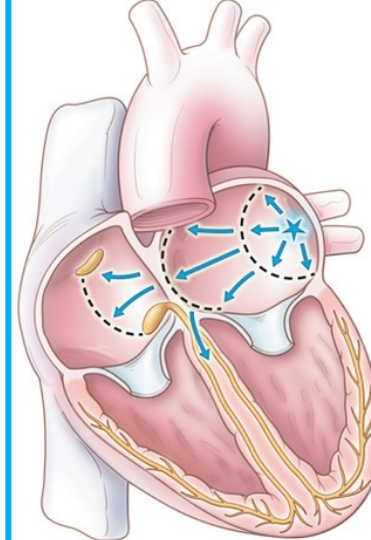
Orthodromic AVRT



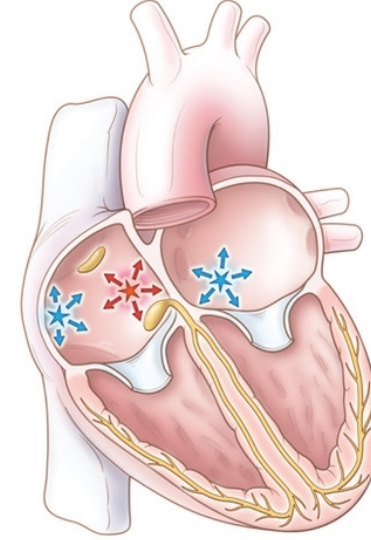
Antidromic AVRT



AT



MAT



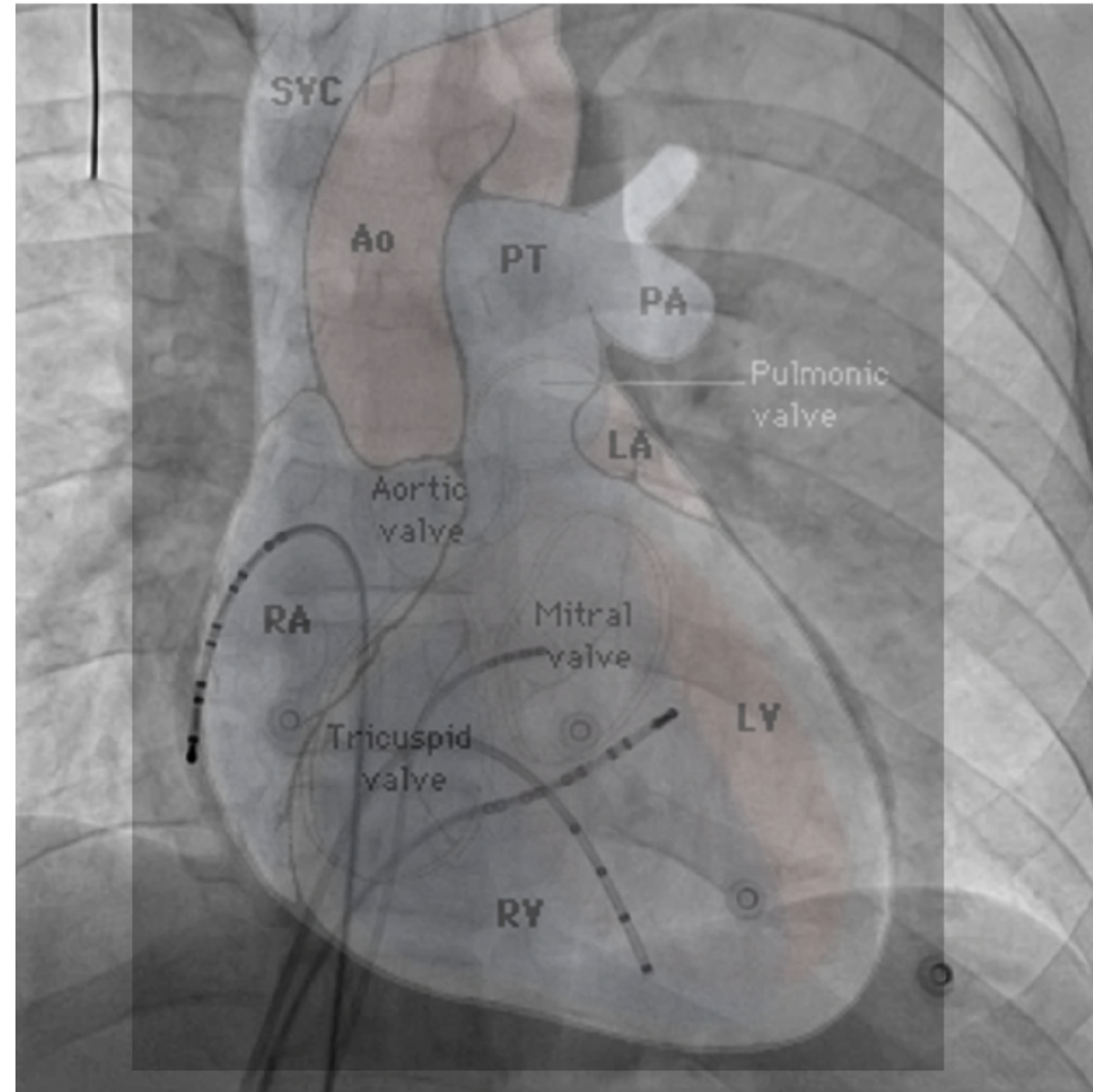
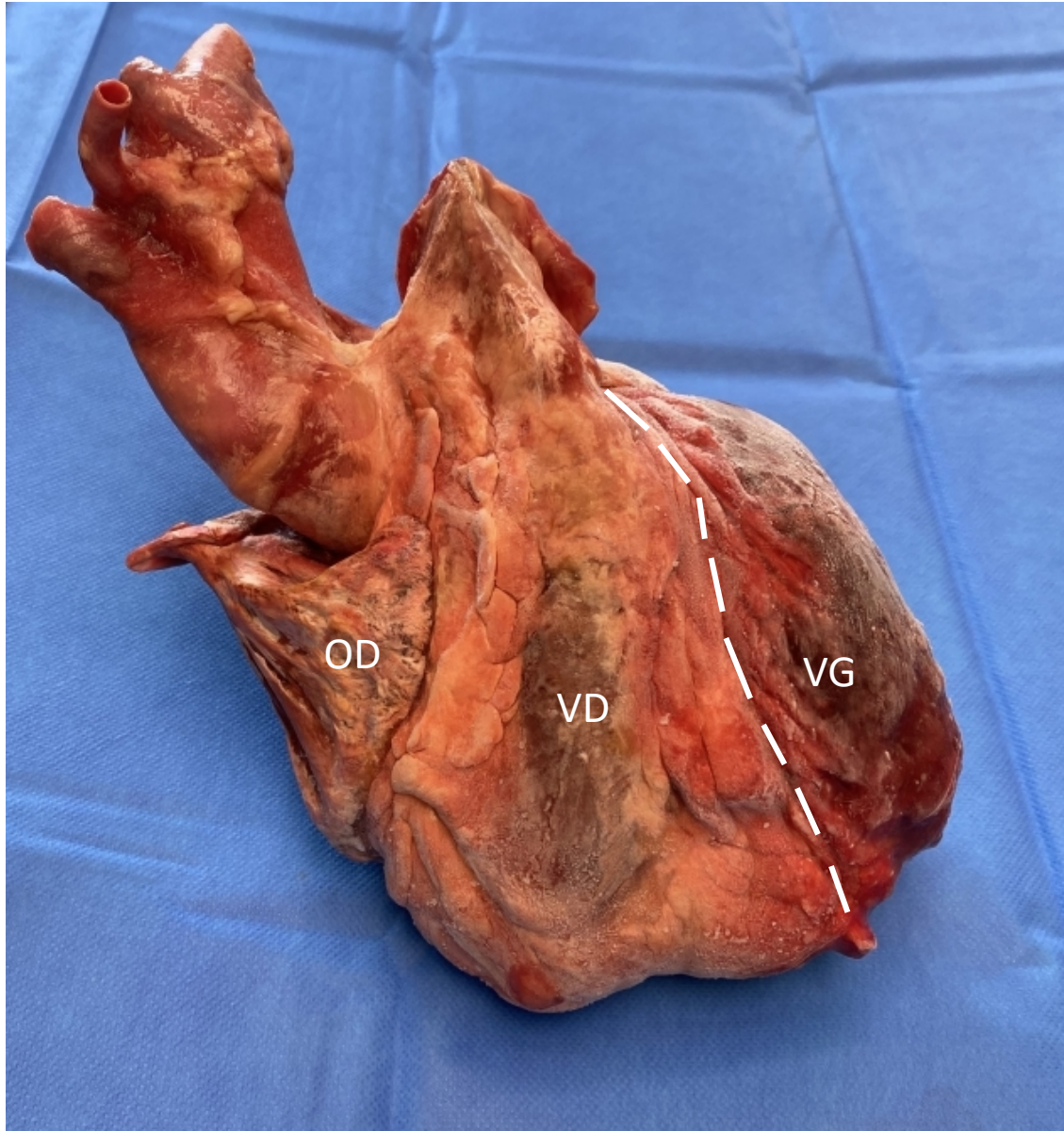
Obstacles anatomiques
→ valve, cicatrices, fibrose
→ zones de bloc ou de ralentissement

Voies supplémentaires

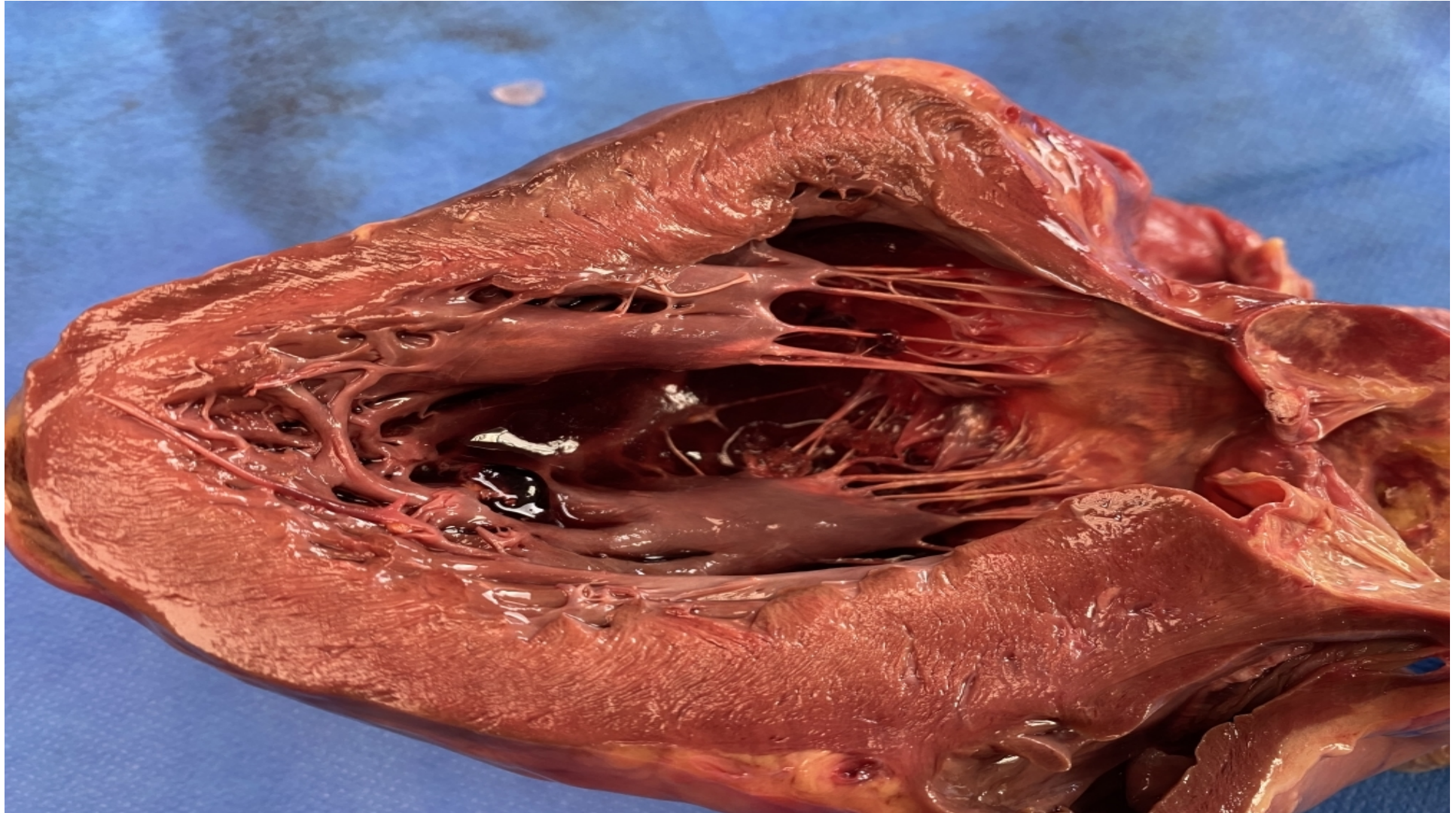
Foyers ectopiques



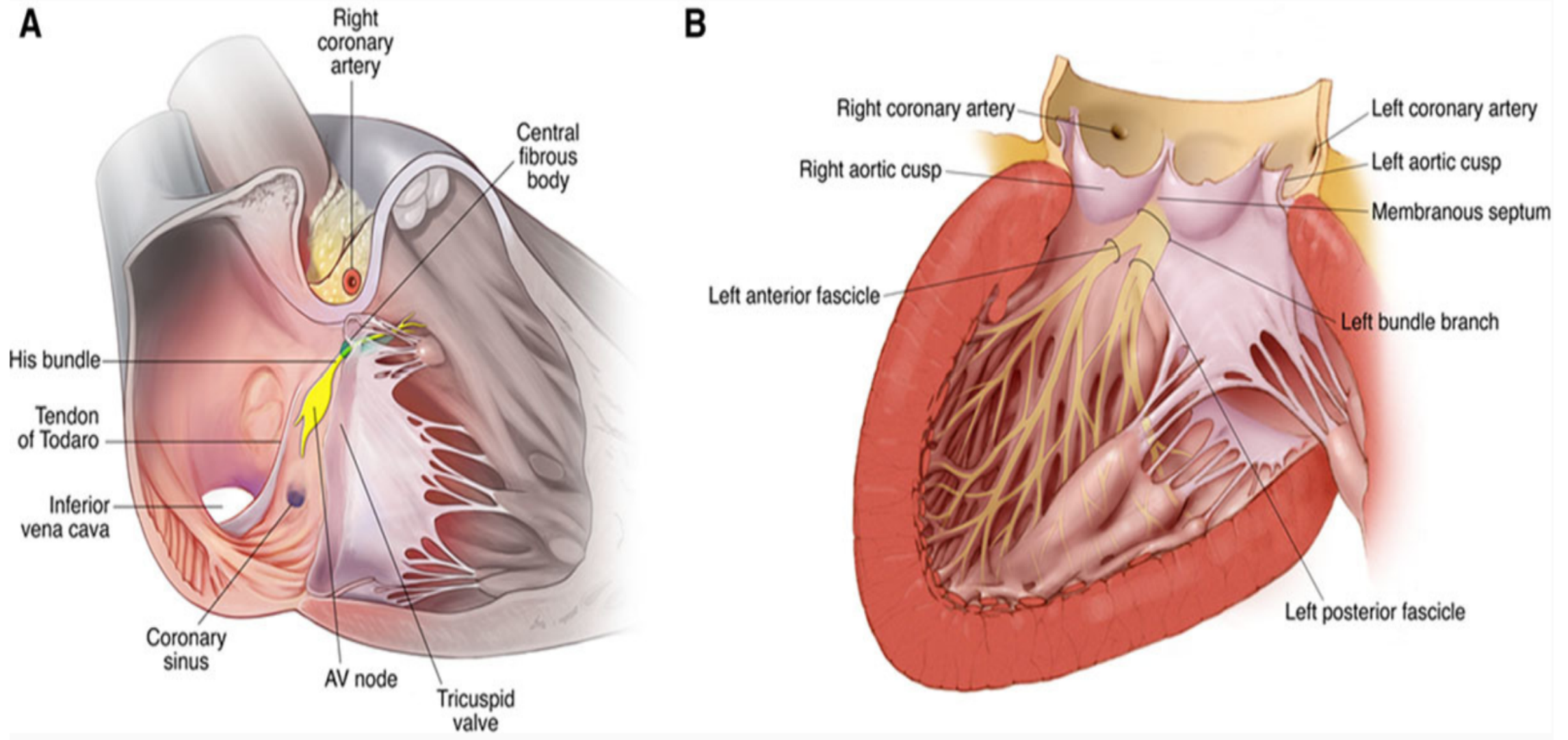
Repères en fluoroscopie : vue AP



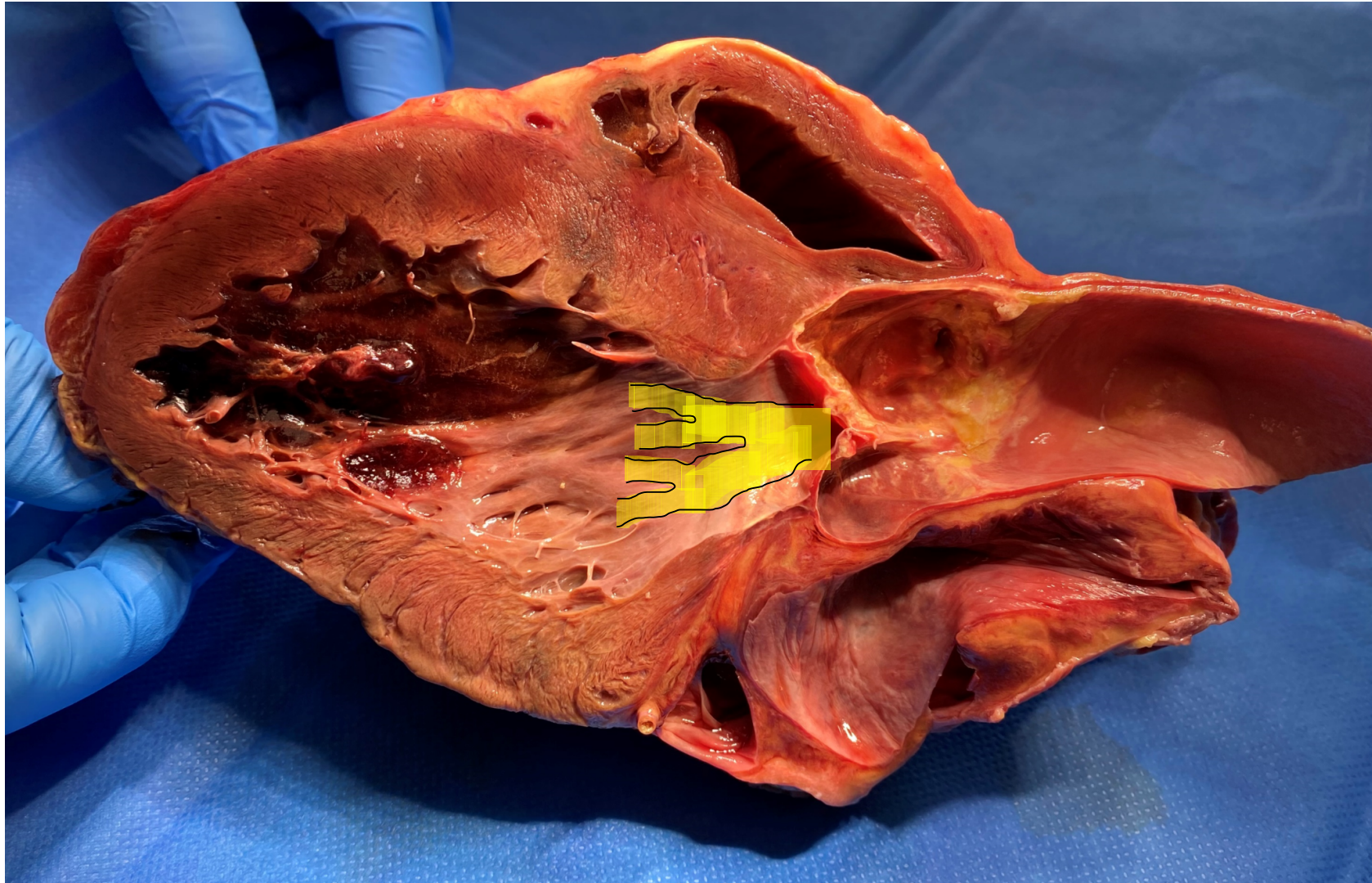
Le ventricule gauche



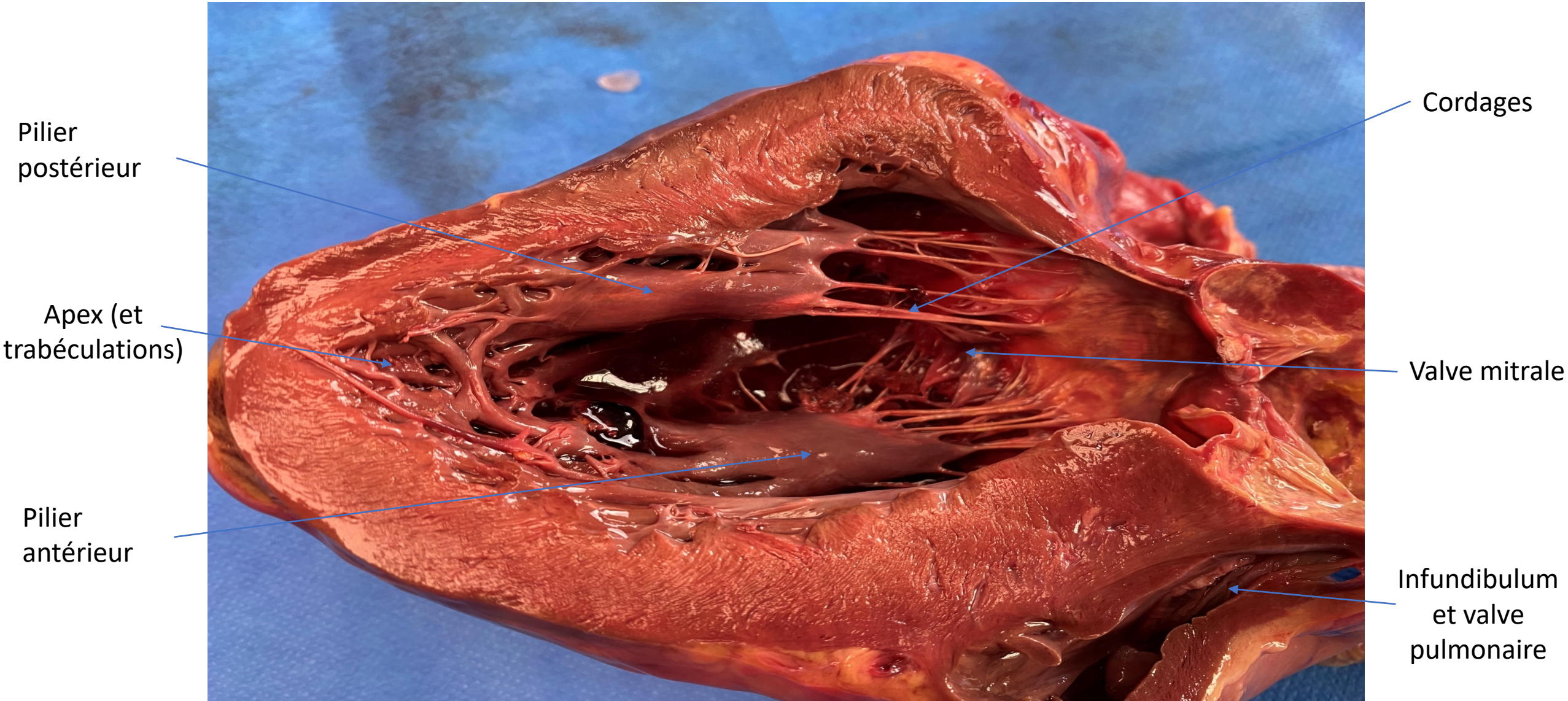
Le VG (1/3) : septum / voies de conduction



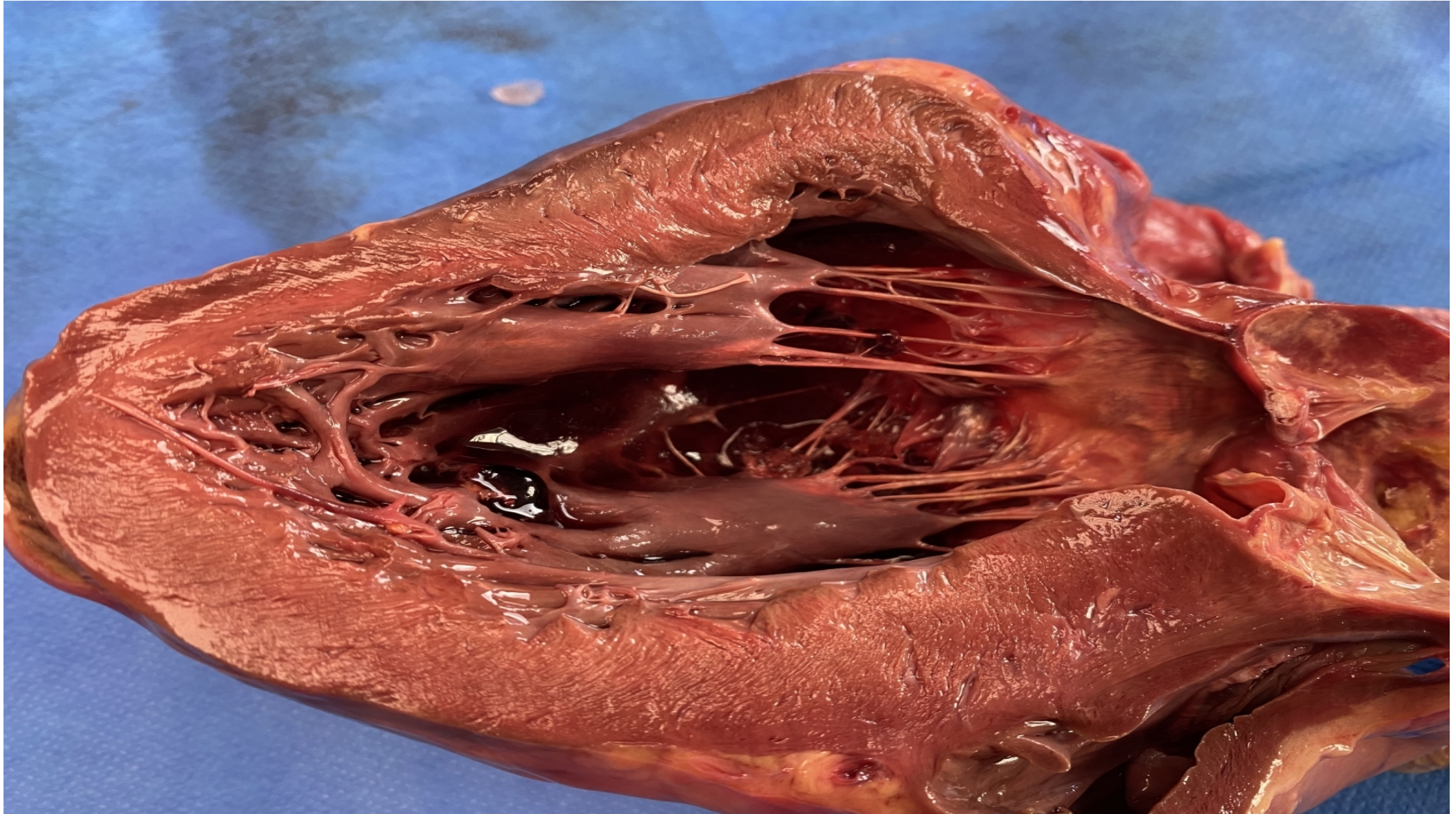
Le VG (1/3) : septum / voies de conduction



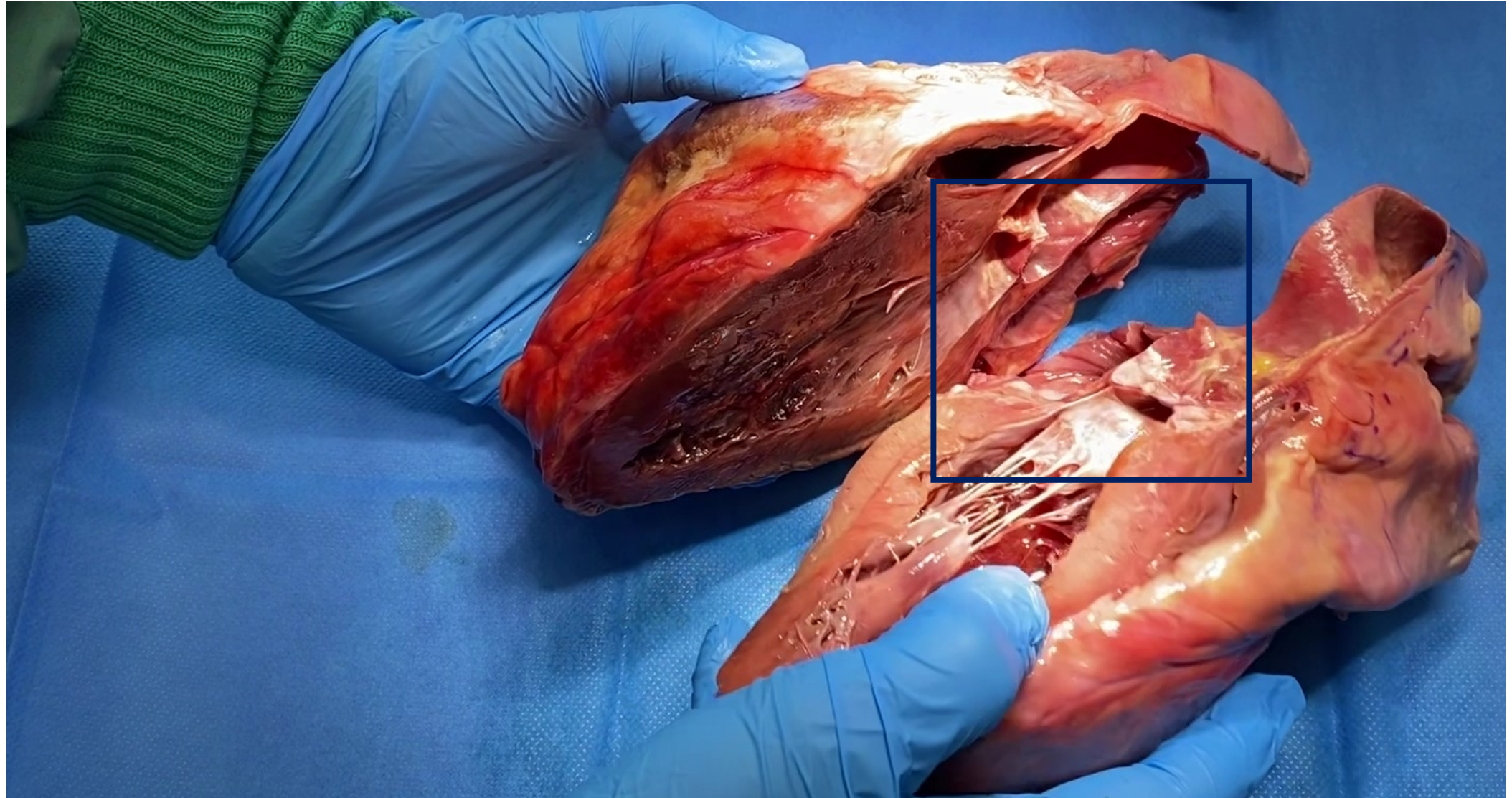
Le VG (2/3) : apex, cordages et piliers



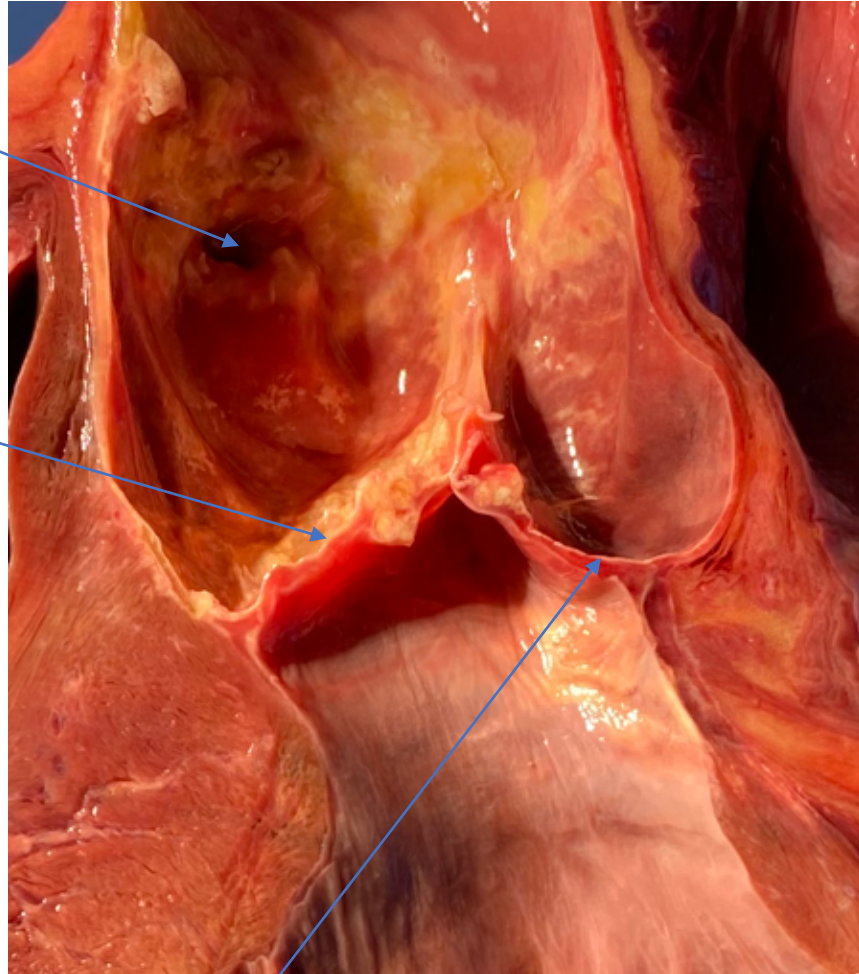
Le VG (2/3) : apex, cordages et piliers



Le VG (3/3) : chambre de chasse



Le VG (3/3) : chambre de chasse



Ostium
CD

Cusp
coronaire
droite

Cusp non
coronaire

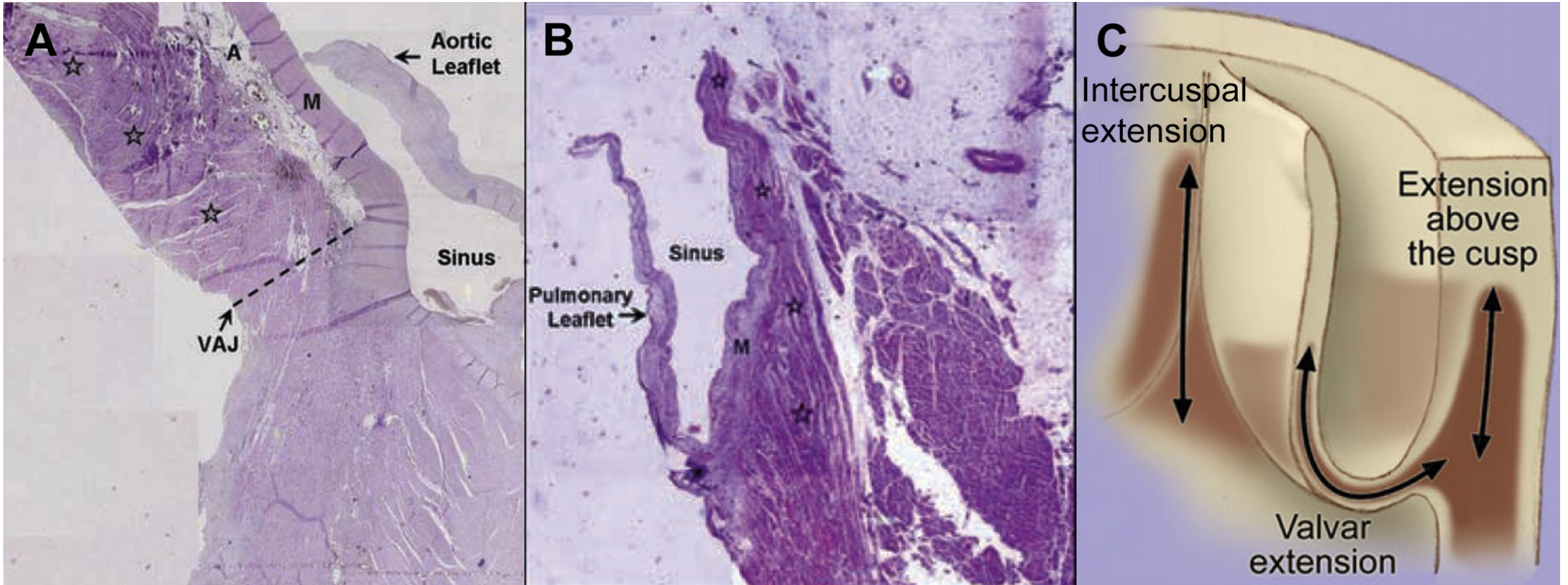


Ostium
TCG

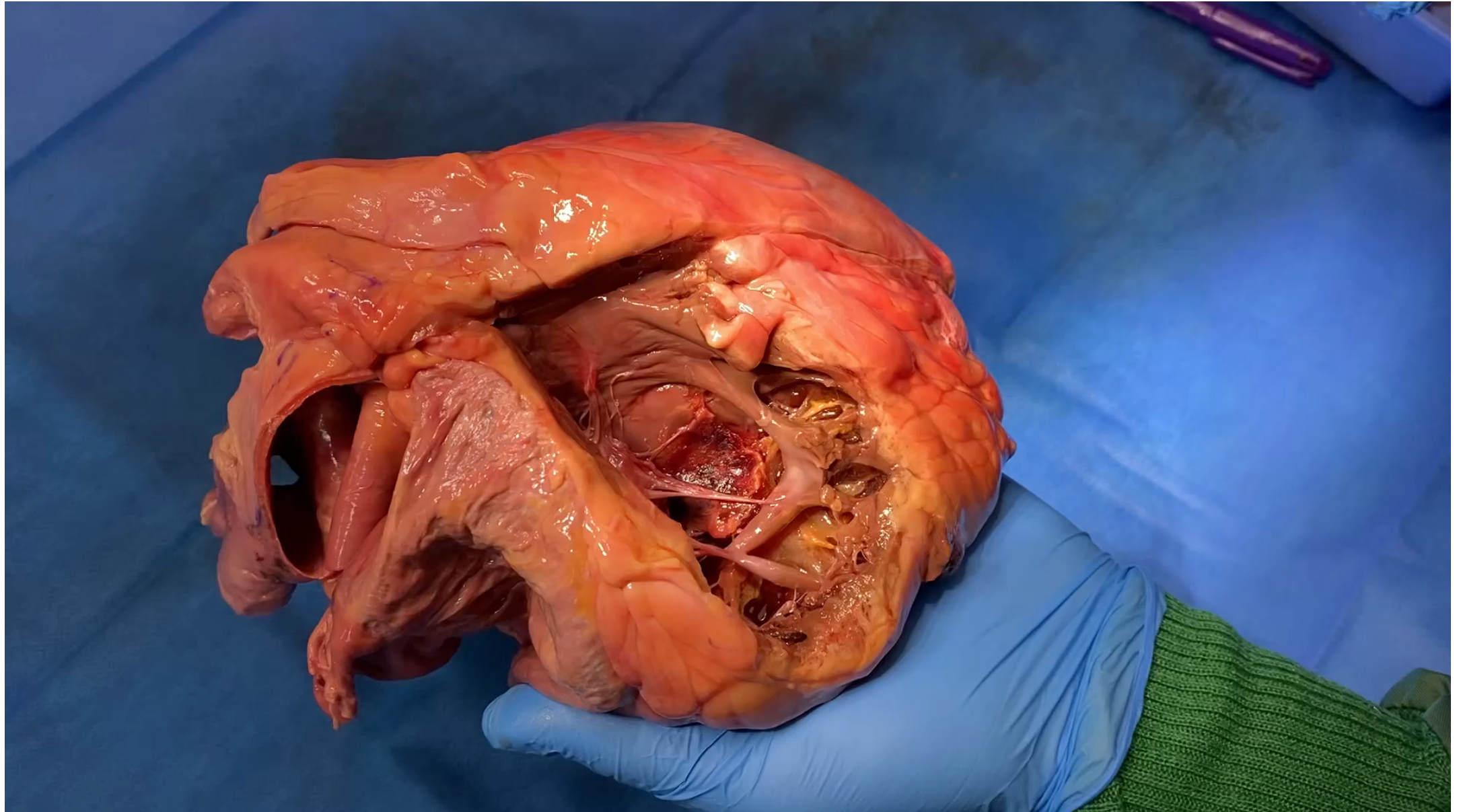
Cusp non
coronaire

Cusp
coronaire
gauche

Le VG (3/3) : chambre de chasse



Le ventricule droit



Le VD (1/2) : valve tricuspide / voies de conduction

Muscle papillaire septal

Septum membraneux

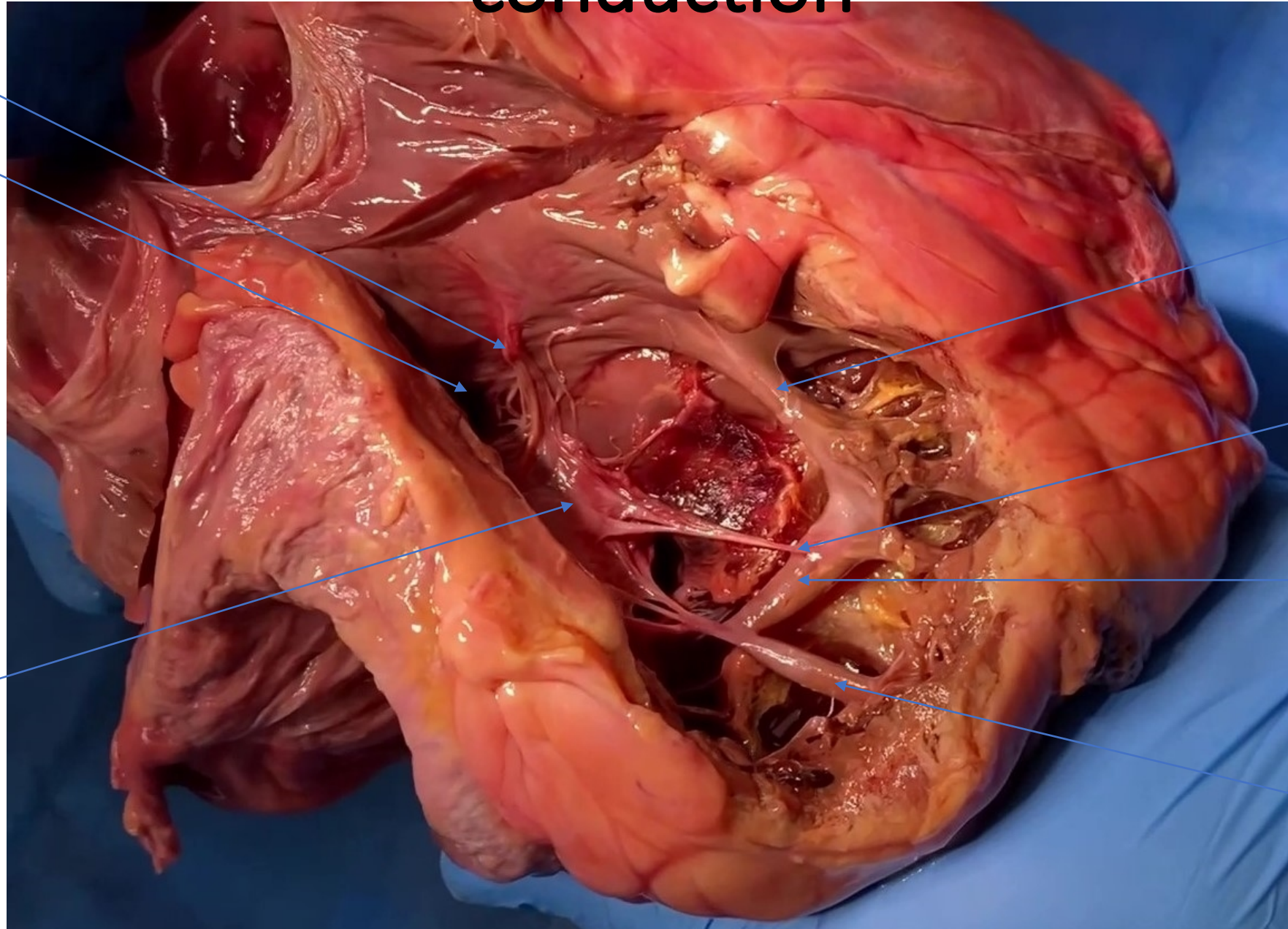
Valve tricuspide

Trabéculation septo-marginale

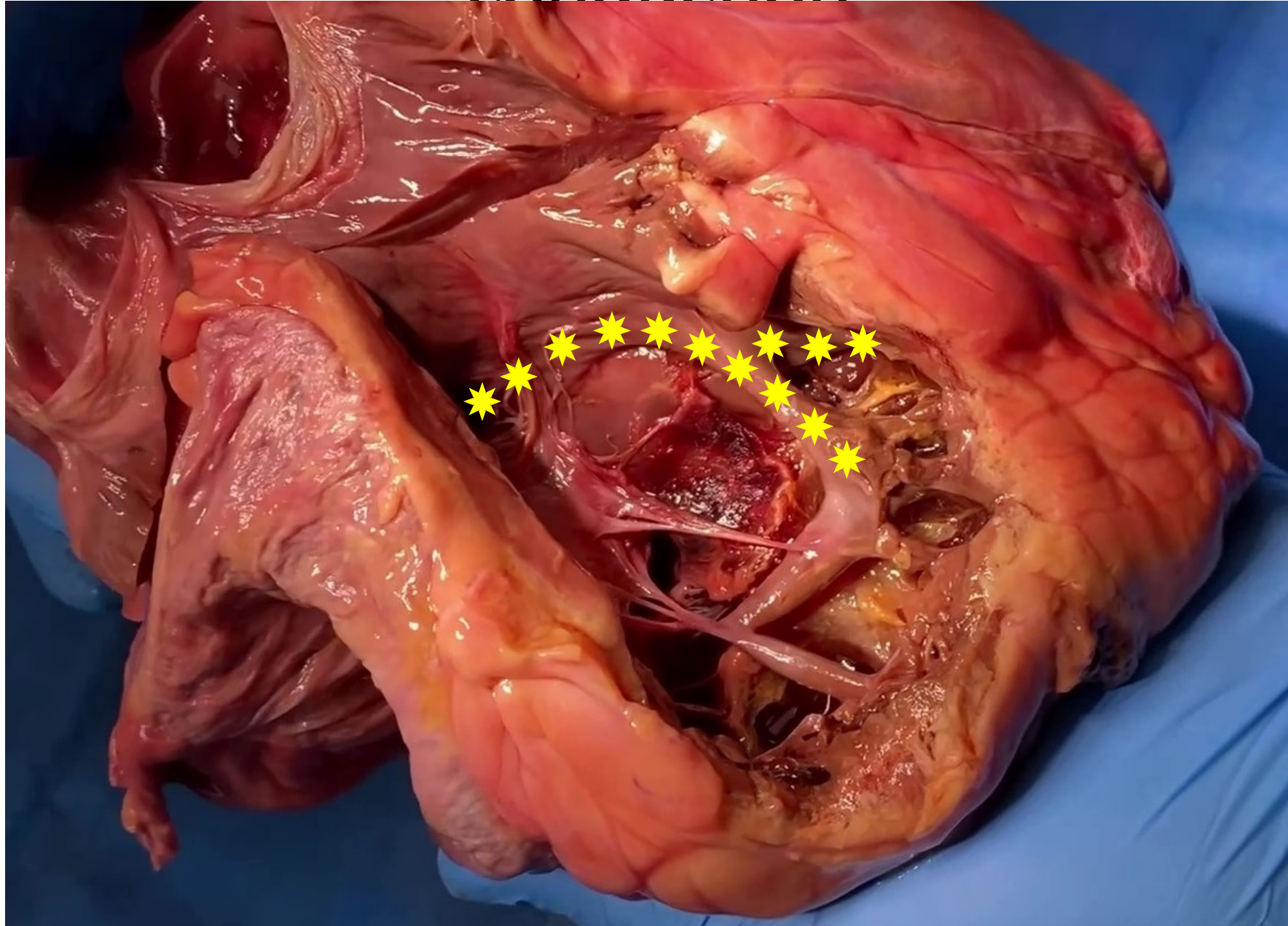
Muscle papillaire antérieur

Bandelette modératrice

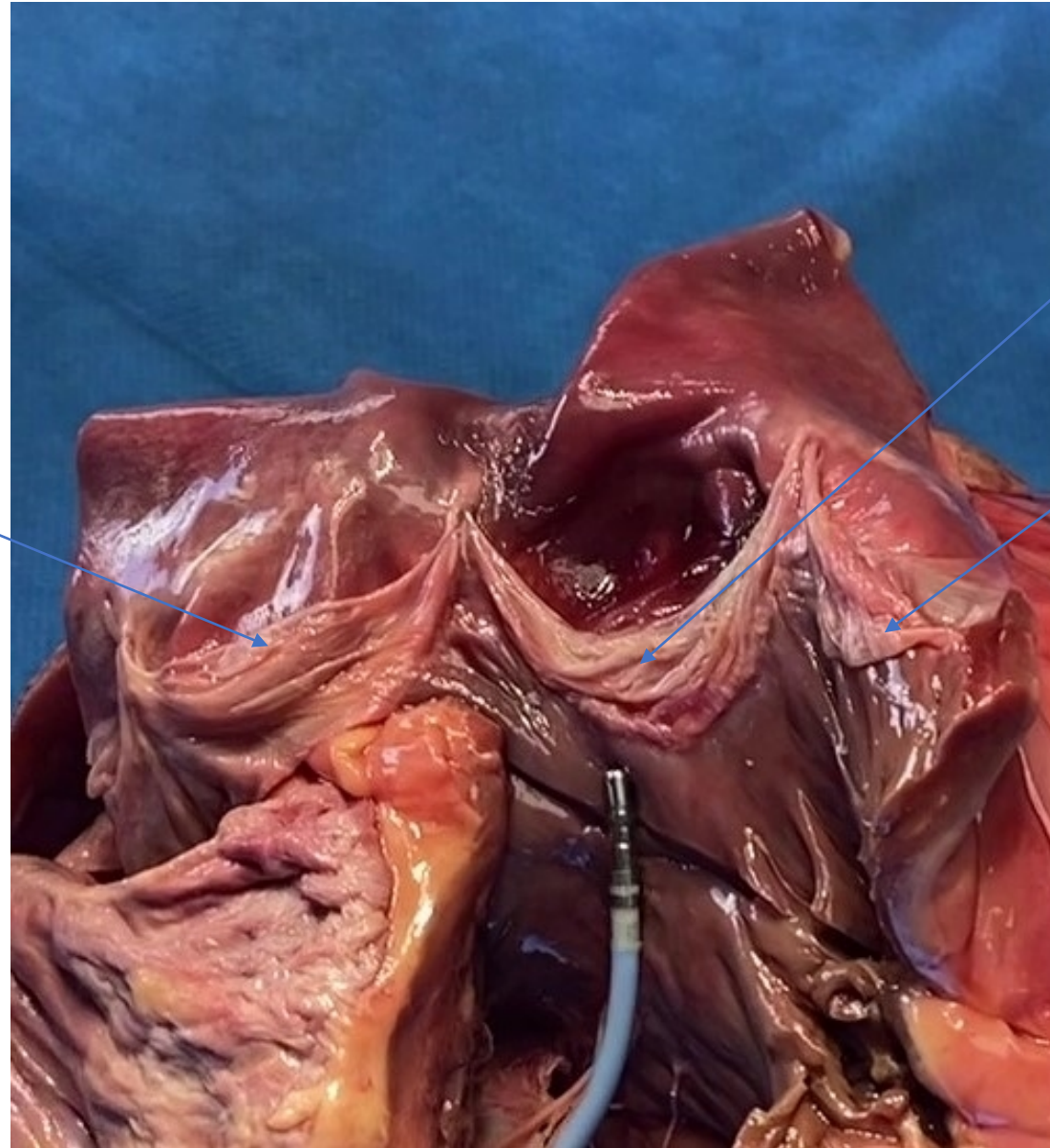
Muscle papillaire inférieur



Le VD (1/2) : valve tricuspide / voies de conduction



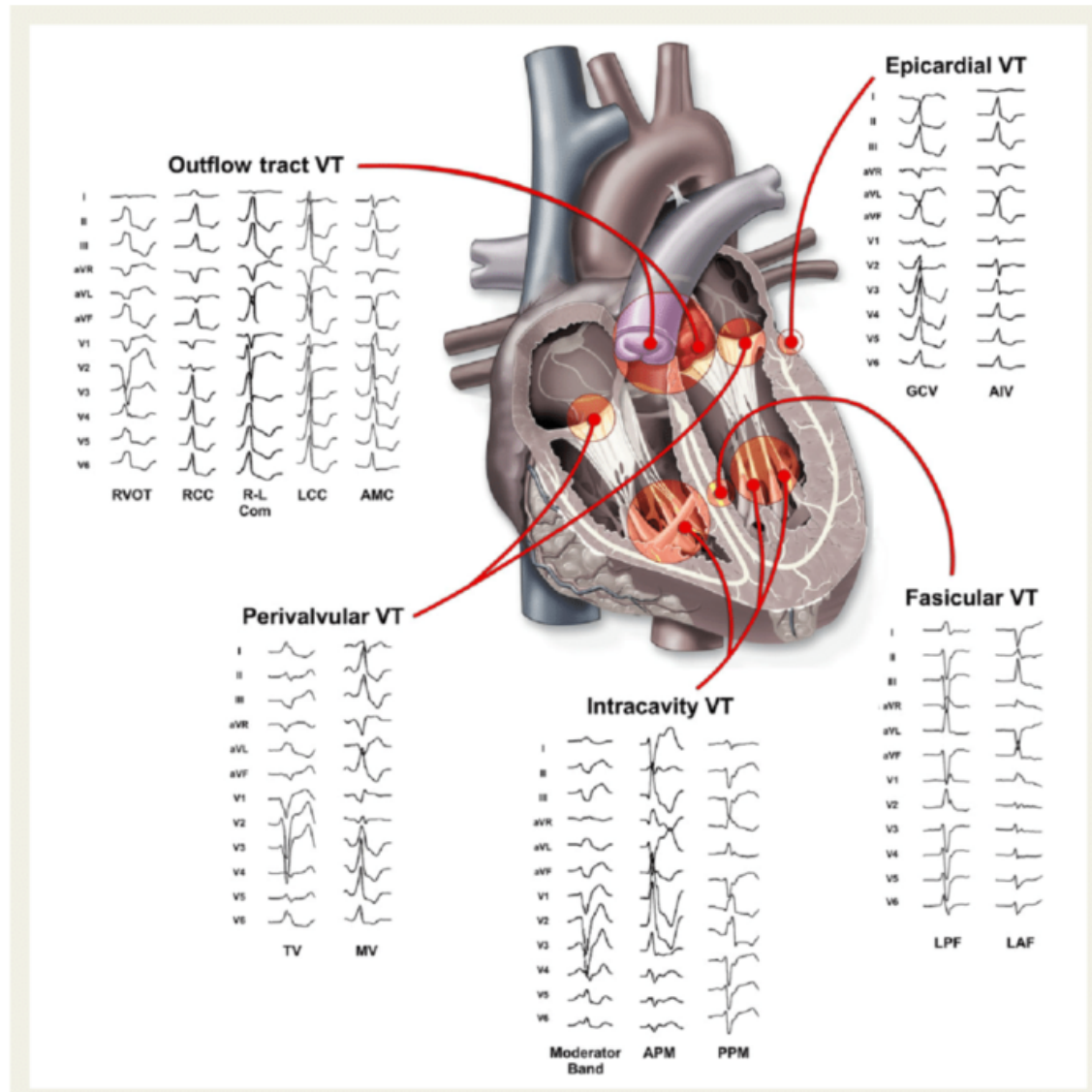
Le VD (2/2) : chambre de chasse



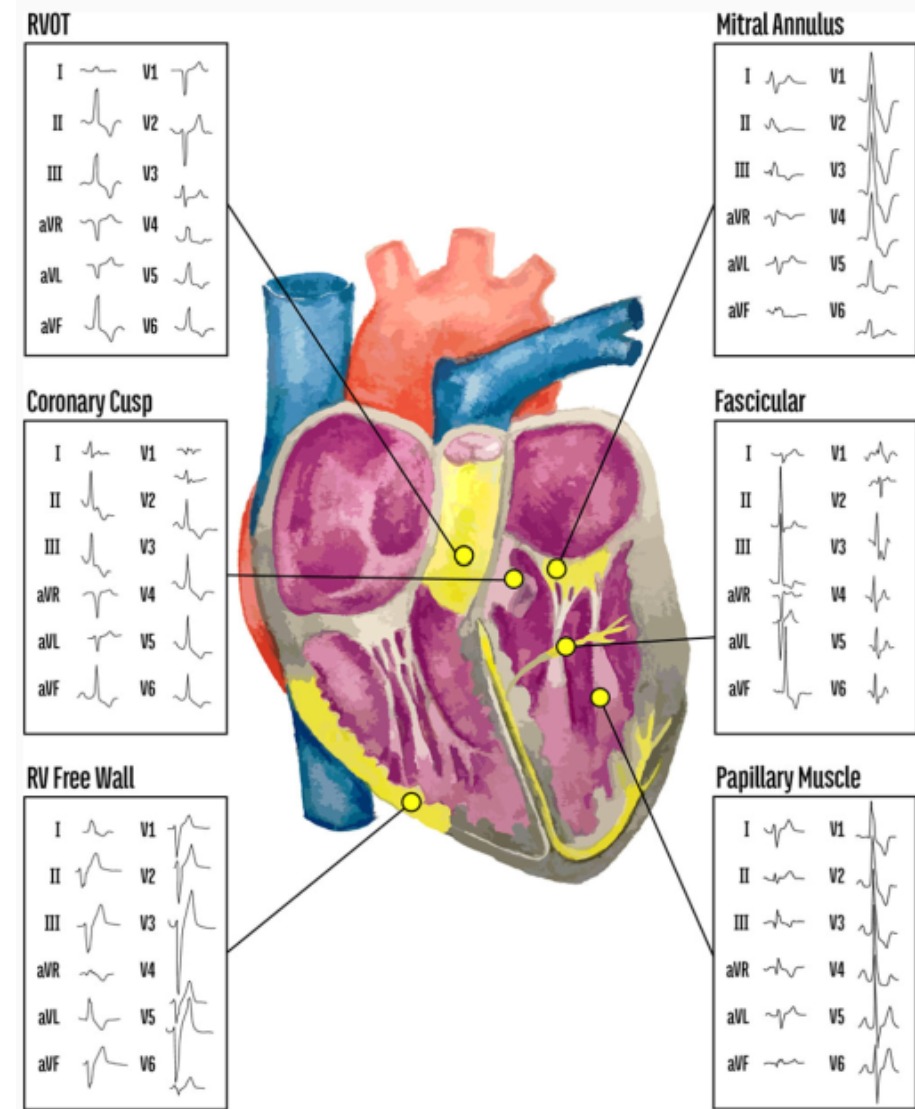
Valve
pulmonaire

Infundibulum
pulmonaire

En conclusion : de l'anatomie... à la pratique



Tanawuttiwat T, et al. Eur Heart J. 2016



Marcus GM. Circulation. 2020



ELECTRA 

4-5 DÉCEMBRE 2025

VILLA M. - MARSEILLE | FRANCE

**19^{èmes} journées françaises
pratiques de rythmologie
& de stimulation cardiaque**

WWW.CONGRES-ELECTRA.COM

Merci pour votre attention !